



Mercy Health

Care first

# Your accommodation options



## Mercy Place Parkville

1 William Street  
Parkville Vic 3052  
Phone: 1300 074 211  
Email: [MPParkville@mercy.com.au](mailto:MPParkville@mercy.com.au)

[mercyhealth.com.au](http://mercyhealth.com.au)

# Our home

---



At Mercy Place Parkville, we are proud to provide high-quality care and accommodation where residents can feel safe, comfortable and valued. You can choose from a variety of room layouts, all of which are stylishly decorated with modern amenities. Our rooms are also fitted with specialist equipment including discreet ceiling hoist tracks, allowing you to continue living in your own familiar space if your needs change.

Our inner-city home features large dining rooms, activity rooms, a library, kitchenettes and cosy reading nooks where you can relax

or entertain family and friends. All common areas display contemporary artwork and have well-appointed furniture and premium décor. Bask in the sunshine in our internal courtyard and balconies or grab a coffee and a cake at our neighbouring cafe. Our popular community hub features a beautiful chapel for quiet reflection as well as an on-site hairdresser for when you feel like a little pampering.

Mercy Place Parkville provides additional services for residents. Please speak with the Client Services Team for a full list of services and the cost.

# Choosing a room

---

Spread out over three floors, our lovely rooms all have their own private ensuite. Enjoy the high-quality furniture and fittings, including wall-mounted flat screen TVs, air conditioning and heating, built-in wardrobes and space for your personal treasures. Add a touch of luxury by choosing a room with tasteful décor, natural light or beautiful views.



# Our rooms

You can choose to pay for your room by a **Refundable Accommodation Deposit (RAD)**, a **Daily Accommodation Payment (DAP)** or any combination you choose. A RAD is paid as a lump sum. A DAP accrues daily and is paid periodically, for example monthly. A combination payment includes a partial lump sum and daily payments. We also offer a drawdown option.

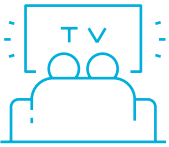
See our *Understanding the costs* brochure for an explanation of payment options or speak to our Resident Liaison Officer about how we can tailor a payment package to suit your needs.

FEATURES						PAYMENT OPTIONS			
		Room	Ensuite	Size	Floor	View	RAD	DAP	Combination payment example (50% RAD + 50% DAP)
Classic		Single	Private	16—18.5m <sup>2</sup>	1		\$	\$	RAD \$ + DAP \$
Classic+		Single	Private	16—18.5m <sup>2</sup>	G		\$	\$	RAD \$ + DAP \$
Grande		Single	Private	16—16.5m <sup>2</sup>	G		\$	\$	RAD \$ + DAP \$
Grande+		Single	Private	16—16.5m <sup>2</sup>	G	✓	\$	\$	RAD \$ + DAP \$
Deluxe		Single	Private	16m <sup>2</sup>	1, 2		\$	\$	RAD \$ + DAP \$
Deluxe+		Single	Private	14.6—18m <sup>2</sup>	1	✓	\$	\$	RAD \$ + DAP \$
Premier		Single	Private	16—16.5m <sup>2</sup>	1	✓	\$	\$	RAD \$ + DAP \$
Premier+		Single	Private	14.6—18.5m <sup>2</sup>	2	✓	\$	\$	RAD \$ + DAP \$
Superior		Single	Private	16—16.5m <sup>2</sup>	2	✓	\$	\$	RAD \$ + DAP \$
Superior+		Single	Private	16—16.3m <sup>2</sup>	2	✓	\$	\$	RAD \$ + DAP \$

Prices are effective as of and are subject to change.

# Mercy Plus

Mercy Plus (Additional Services) offers an exceptional range of amenities and activities designed to enrich your experience at Mercy Health. These thoughtfully curated services go beyond the ordinary to enhance daily living, ensuring our residents enjoy a fulfilling and vibrant lifestyle.



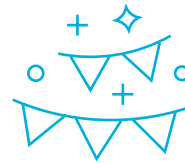
## Engage & Unwind: A World of Entertainment at Your Fingertips

- Stay connected with daily newspapers in common areas
- Enjoy the latest shows in your room on a Smart TV
- Access Wi-Fi to stream your favourite movies or TV shows
- Relax with streaming services available in common areas
- Keep connected with a personal phone in your room (on request)



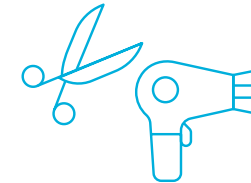
## Culinary Delights & Cherished Moments

- Savour gourmet choices with our daily choice of hot lunches
- Start your day right with a hot breakfast, twice a week
- Indulge in fine dining & wine served with dinner every day
- Unwind & socialise at our weekly happy hour
- Relish in the warmth of weekly coffee gatherings
- Celebrate life with monthly celebratory festivities



## Vibrant Living: Social Events & Adventures

- Explore new horizons with our monthly bus trips
- Enjoy the magic of cinema with monthly movie nights
- Be entertained by talented performers every month



## Tailored Care & Personal Touches

- Keep your wardrobe organised with personalised clothing labels
- Indulge in relaxation with monthly pamper sessions
- Experience the joy of receiving small gifts to celebrate key moments
- Stay connected with onsite tech support, just for you

**Speak with the Client Services team to find out more about Mercy Plus at your Mercy Health home.**

# Mercy Place Parkville – Ground floor

All rooms at Mercy Place Parkville have the following standard features:

- single room
- private ensuite
- air conditioning and heating
- built-in wardrobe
- wall-mounted TV
- high-quality furniture and fittings
- ceiling track hoist

## CLASSIC+

Classic+ rooms within our dedicated Memory Support Unit, have natural light and views of the internal courtyard or neighbourhood surrounds.

## GRANDE

Our Grande rooms provide convenience and easy access to common areas such as the chapel and tranquil internal courtyard.

## GRANDE+

If you prefer the ground floor, choose a Grande+ room which feature a north-facing outlook or a view of Willam Street.



## MEMORY SUPPORT UNIT



# Mercy Place Parkville – First floor

## CLASSIC

For those looking for the most affordable option, select one of our Classic rooms on the first floor.

## DELUXE

Choose a Deluxe room on the first or second floor for a view of our gorgeous internal courtyard. Alternatively, we have rooms on the second floor specifically designed for couples.

## DELUXE+

Our popular Deluxe+ rooms, located on the first floor, feature an abundance of natural light with street views to Willam Street or Avenger Park.

## PREMIER

Our Premier rooms welcome in plenty of natural light with north-facing views towards Willam Street and the local neighbourhood. Located on the first floor, these rooms are closely located to common areas and the reading room.



# Mercy Place Parkville – Second floor

## DELUXE

\*For those residents looking for couples' accommodation, choose one of two Deluxe room options on the second floor. Rooms 2.05 and 2.07 have a view to the courtyard, while rooms 2.33 and 2.35 look out onto Avenger Park.

## PREMIER+

All Premier+ rooms on the second floor have elevated views of the internal courtyard. Relax in your own tranquil space or head to one of the nearby common areas to enjoy an activity with friends.

## SUPERIOR

Located on the second floor, our Superior rooms welcome an abundance of natural light. You can choose a room with an elevated neighbourhood view of Avenger Park or Willam Street.

## SUPERIOR+

These beautiful Superior+ rooms are awash with natural light with their highly sought-after north-facing windows. You can revel in the aerial view of the local Parkville neighbourhood from your own private space.



Call now to book  
a personal tour  
of Mercy Place  
Parkville.

## About Mercy Health

The modern story of Mercy Health began with the founding of the Order of the Sisters of Mercy in Dublin in 1831 by Catherine McAuley, who dedicated her life to serving people in need.

The Sisters of Mercy went on to found convents, schools and hospitals across the globe. They arrived in Australia in 1846, led by Mother Ursula Frayne.

Following a devastating influenza pandemic, the Sisters of Mercy opened their first Victorian hospital — St Benedict's in Malvern — in 1920.

As Mercy Health, they established a reputation for excellence in care and hospitality that has grown in strength to this day.

A leading Catholic provider of health, aged and community services, our history and future is based on responding to the most significant needs of the time.

We employ and care for people of all faiths and no faith. Our people come from many cultures and backgrounds but share a common goal: to provide compassionate and responsive care to people in need.

### Mercy Place Parkville

1 Willam Street  
Parkville Vic 3052  
Phone: 1300 074 211  
Email: MPParkville@mercy.com.au

[mercyhealth.com.au](http://mercyhealth.com.au)



Mercy Health acknowledges Aboriginal and Torres Strait Islander Peoples as the First Australians. We acknowledge the diversity of Indigenous Australia. We respectfully recognise Elders past and present. This brochure was produced on Wurundjeri Country.

